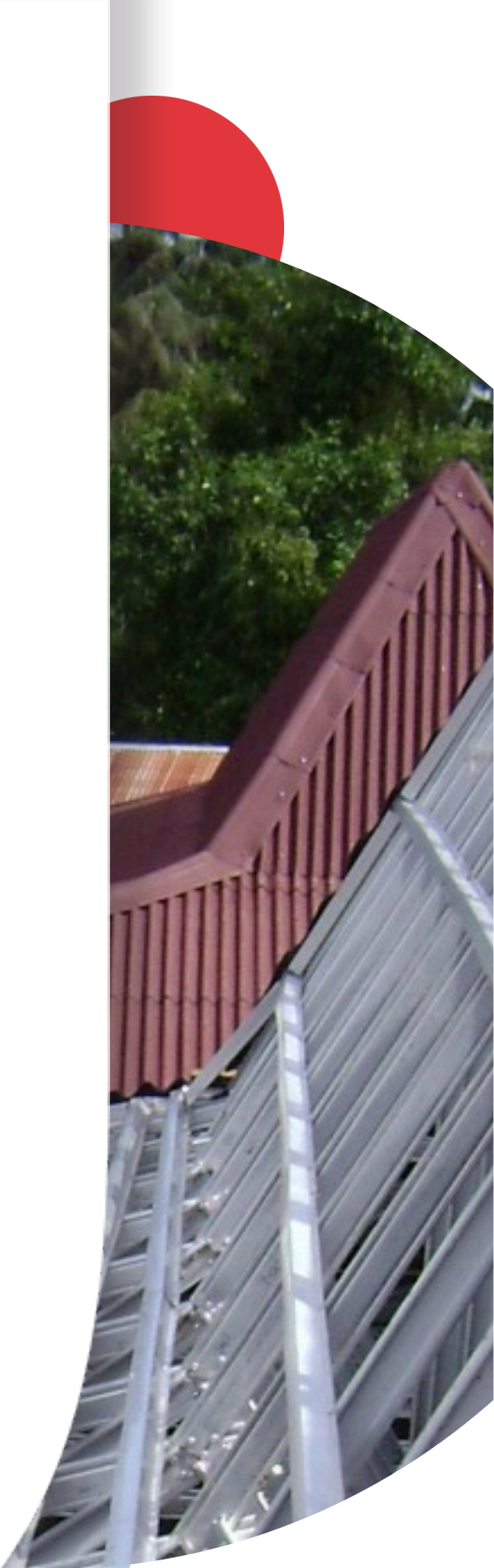


# ONDULINE<sup>®</sup>



## LIGHTWEIGHT ROOFING SYSTEMS



**Onduline<sup>®</sup>**

Lightweight Roofing Systems

# ▶ LIGHTWEIGHT PURLINS

ONDULINE® lightweight purlins are the perfect choice



Purlins traditionally support the roof deck / cladding / sheeting and are in turn supported by the principal rafters / steel beams etc. Lightweight purlins is a cost effective structure that provides the basis for a perfectly straight roof. The steel sections are sufficiently ridged to ensure a perfect base for roof cladding. Steel does not tend to warp with age and a high quality finish is maintained over the full life span of the building.

The fact that the purlin is very light in comparison to other types available in the market, makes it ideal for manual handling on site and speedy erection. Lightweight purlins, in most instances, offer a cost advantage over other roofing structures. The fact that it is easily assembled on site leads to a significant saving on transport costs.



Lightweight



Durable



Professional Quality



Economical



Simplify Transport



Eco-responsible

## Specifications

LENGTH	5800 mm
TOP WIDTH	25.82 mm [± 2 mm]
BASE WIDTH	68.59 mm [± 2 mm]
THICKNESS	0.5 mm [± 10%]
HEIGHT OF CORRUGATION	38 mm
WEIGHT	0.5 kg / m
COATING DETAILS	Az150 150gm/sqm

## Features

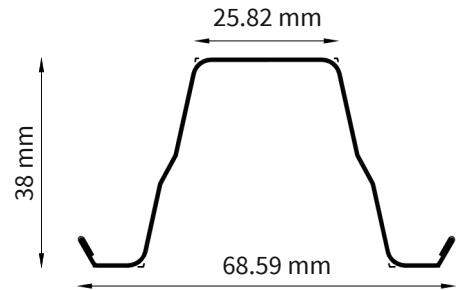
- Lightweight
- Corrosion Resistant
- Cost Effective
- Eco-Friendly
- Professional Quality

## Advantages

- Easy to handle and simplify transportation
- Durable and adaptable to all weather conditions
- Brings down the overall cost of roofing and allows intelligent use of other lightweight materials
- Reduction in carbon emissions through more efficient transportation cost

## Material Specifications

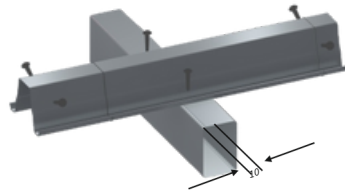
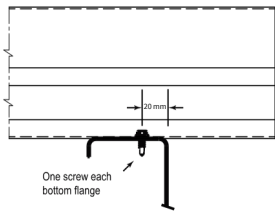
Yield Strength	550 MPa
Point Load (Purlin supported at 3 span)	1.6 KN (At a rafter span of 800mm)
Uniformly Divided Load	3.3 KN (At a rafter span of 800mm)



## INSTALLATION GUIDELINES

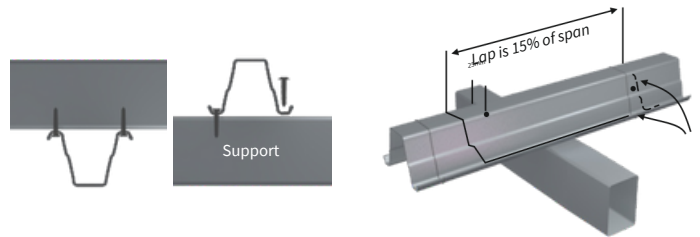
### • Fixing

Always use the correct size and quantity of fasteners as specified. Screws at connections must be directly in line (parallel with the supporting member). One screw to be fastened on each side of purlin at the point of connection with rafters.



### • Laps

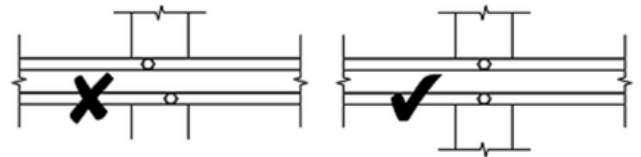
Structural laps for Lightweight purlins require a minimum 15% lap length. End fastenings of Lightweight purlins should be 25mm from the section end irrespective of whether this occurs at the structure end or at an internal support.



## INSTALLATION SPECIFICATIONS

### • Fixing

Minimum 15 cm of overlap is recommended, with minimum 4 screws per overlap. "The recommended screw size is 5mm diameter with minimum 20mm length.



### • Span

Maximum span of rafters is 800 mm.

### • Welding

We do not recommend the welding of lightweight purlins. It should only be screw fastened to the supporting structure.

### • Cutting

Cutting is preferably done by shear or hacksaw. When using abrasive disc blades care must be taken to ensure the swarf produced does not affect other materials and the burred edge should be cleaned off at the completion of cutting.

## Handling and storage

Lightweight purlins must be kept dry during storage. If they become wet they should be separated and stacked openly to allow for ventilation to dry the surface.

## ABOUT ONDULINE®

For about **80 years**, ONDULINE® strategy has successfully combined growth and international development.

The cellulose-bitumen-based roofing and under-roofing material known as ONDULINE® was invented and launched in the French market in 1944 by Gaston Gromier.

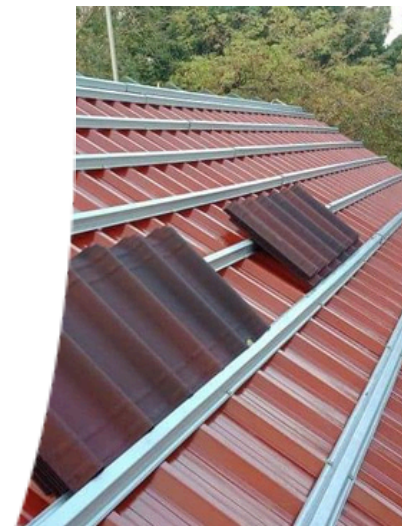
Specialized in **innovative roofing systems**, the group has been growing since then, until leading the market of lightweight roofing systems.

We are the undisputable leader in this segment, manufacturing **more than 95%** of world production of bitumen sheets.

**ONDULINE® is part of Kingspan's Roofing and Waterproofing division.**

Working alongside Kingspan since 2022, we both share common goals: to thrive as an international group and cultivate an entrepreneurial and collaborative culture.

Our shared focus is on **growth, providing excellent customer service**, and **accelerating the transformation** of building solutions towards **more eco-responsible solutions**.



### OFIC Building Materials India Pvt Ltd

CIN No.U45309KA2008PTC048153  
6th Floor, Urban Vault Citrine, Next to Aster Hospital New Airport Road NH 7, Sahakar Nagar, Bengaluru, Karnataka 560092

**Telephone:** +91 9108000444

**Landline:** 080 29910366

**Website:** [in.onduline.com/en](http://in.onduline.com/en)

**Email:** [sales@ondulineindia.com](mailto:sales@ondulineindia.com)



# Onduline®

Lightweight Roofing Systems

